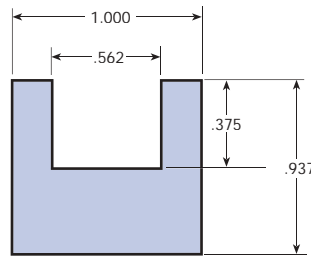


CONVEYOR COMPONENTS

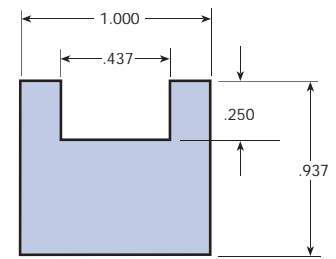
CABLE GUIDES & CABLE IDLERS

UHMW Cable Guides

TSE can line cable guides are machined from the finest UHMW to ensure a smooth, friction-free running surface for all cables. It is common to double cable life through their use.



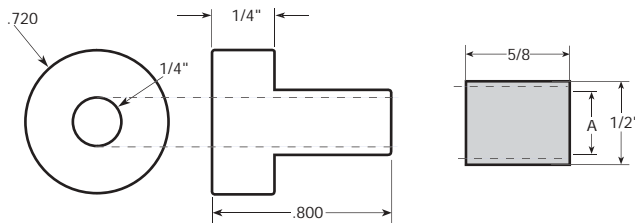
TSE-461 - 1/2" Cable



TSE-460 - 3/8" Cable

UHMW Cable Pulleys For 3/8 Dia. Cable

TSE-06377
Polyethylene spacer 3/4" O.D. x 1/4" wide for use with TSE-06497-2 bushing

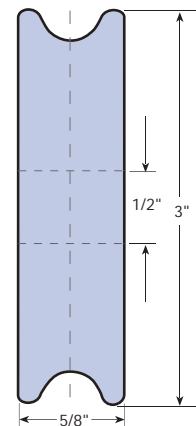


TSE-06497-1 1/4" (A)
TSE-06497-2 3/8" (A)
Stainless Steel Bushings

TSE-06497
UHMW green and white can line cable pulleys with stainless bushing. Specify 1/4" I.D. or 3/8" I.D. bushing.



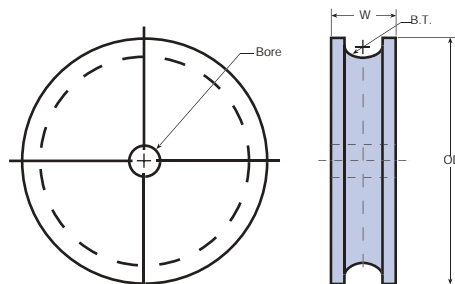
TSE-06497



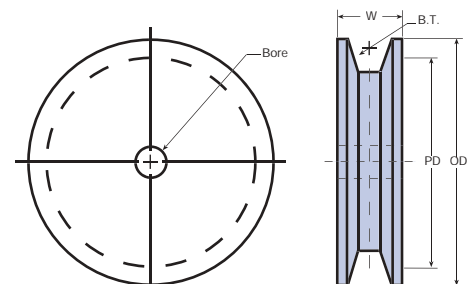
Custom Plastic Sheaves

Custom Orders

OD _____
Bore _____
Keyway _____
Belt Type(BT) _____
Width (W) _____
Pitch Dia. (PD) _____
Quantity _____
Material _____



Round Belt Pulley



V Belt Sheave