

# CONVEYOR COMPONENTS

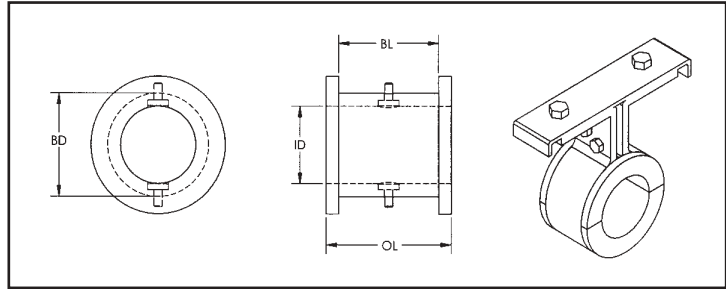
## HANGER BEARINGS FOR SCREW CONVEYORS

UHMW - FDA - OIL FILLED - GLASS FILLED - NYLON - TEFLON®

### TYPE 226

Fits hanger styles 226, 220, 326, 20B, 26B, 28B

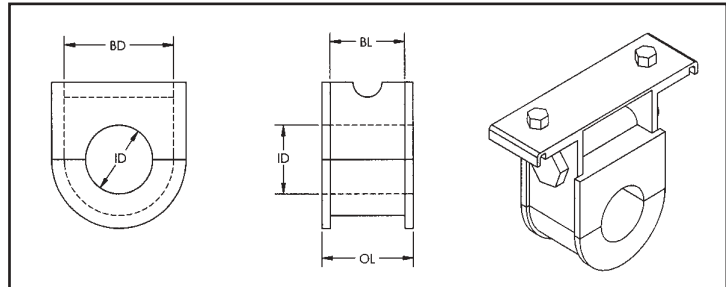
P/N	ID	BD	BL	OL
DX-1000-226	1	1 <sup>1</sup> / <sub>2</sub>	1 <sup>1</sup> / <sub>16</sub>	1 <sup>7</sup> / <sub>16</sub>
DX-1500-226	1 <sup>1</sup> / <sub>2</sub>	2 <sup>1</sup> / <sub>8</sub>	1 <sup>9</sup> / <sub>16</sub>	1 <sup>15</sup> / <sub>16</sub>
DX-2000-226	2	2 <sup>3</sup> / <sub>4</sub>	1 <sup>9</sup> / <sub>16</sub>	1 <sup>15</sup> / <sub>16</sub>
DX-2716-226	2 <sup>7</sup> / <sub>16</sub>	3 <sup>1</sup> / <sub>4</sub>	2 <sup>3</sup> / <sub>8</sub>	2 <sup>15</sup> / <sub>16</sub>
DX-3000-226	3	4	2 <sup>3</sup> / <sub>8</sub>	2 <sup>15</sup> / <sub>16</sub>
DX-3716-226	3 <sup>7</sup> / <sub>16</sub>	4 <sup>3</sup> / <sub>4</sub>	3 <sup>1</sup> / <sub>8</sub>	3 <sup>15</sup> / <sub>16</sub>



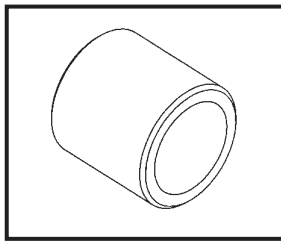
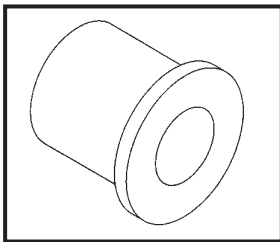
### TYPE 230

Fits hanger styles 230, 216, 316, 16B, 216F

P/N	ID	BD	BL	OL
DX-1000-230	1	1 <sup>9</sup> / <sub>16</sub>	1 <sup>1</sup> / <sub>8</sub>	1 <sup>7</sup> / <sub>16</sub>
DX-1500-230	1 <sup>1</sup> / <sub>2</sub>	2 <sup>1</sup> / <sub>4</sub>	1 <sup>3</sup> / <sub>8</sub>	1 <sup>15</sup> / <sub>16</sub>
DX-2000-230	2	3 <sup>1</sup> / <sub>4</sub>	1 <sup>5</sup> / <sub>8</sub>	1 <sup>15</sup> / <sub>16</sub>
DX-2716-230	2 <sup>7</sup> / <sub>16</sub>	4	1 <sup>5</sup> / <sub>8</sub>	2 <sup>15</sup> / <sub>16</sub>
DX-3000-230	3	4 <sup>1</sup> / <sub>2</sub>	2 <sup>1</sup> / <sub>8</sub>	2 <sup>15</sup> / <sub>16</sub>
DX-3716-230	3 <sup>7</sup> / <sub>16</sub>	4 <sup>7</sup> / <sub>8</sub>	2 <sup>11</sup> / <sub>16</sub>	3 <sup>15</sup> / <sub>16</sub>



TSE CUSTOM BEARINGS are available in most Engineered Plastics... from UHMW to Teflon®. Please call our customer service team for help in selecting the right material for your application.



Flange OD \_\_\_\_\_  
 O.D. \_\_\_\_\_  
 ID \_\_\_\_\_  
 LTB \_\_\_\_\_  
 THK \_\_\_\_\_  
 Material \_\_\_\_\_  
 Quantity \_\_\_\_\_

