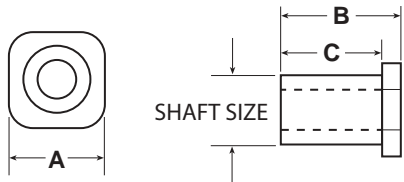


ROLL END BEARING ACCESSORIES

LIGHT DUTY STUB SHAFT (ACETAL)

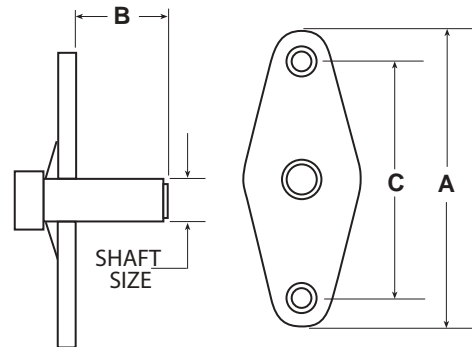


Part No.	A	B	C	Shaft Size
REA-500-12-P	.6875	.875	.750	1/2"

Usage: Light duty stub shaft used with a 5/16-16 hex bolt through the side of the frame. **Injection** molded roll end bearing and stub shaft designed for light duty applications can run in dry or wet environments to provide a virtually maintenance-free service, to improve cleanliness, and to reduce noise levels.



HEAVY DUTY STAINLESS STUB SHAFT (NYLON)



Part No.	A	B	C	Shaft Size
REA-00-12-s	3.750	1.250	3.00	1/2"

Usage : Bolt to outside of conveyor for easy removal of roller.



REDUCER BUSHING

P/N	A	B	C	D	Shaft Size
RE1-14-12	.625	.537	0.065	1.400	1/4"
RE1-516-12	.625	..537	0.065	1.400	5/16"

Material: Nylon alloy

For pinchain, press insert into one-piece Nylon roll end bearing to reduce bore size.

(Can press fit into any 1/2" I.D. Roll End Bearing)

