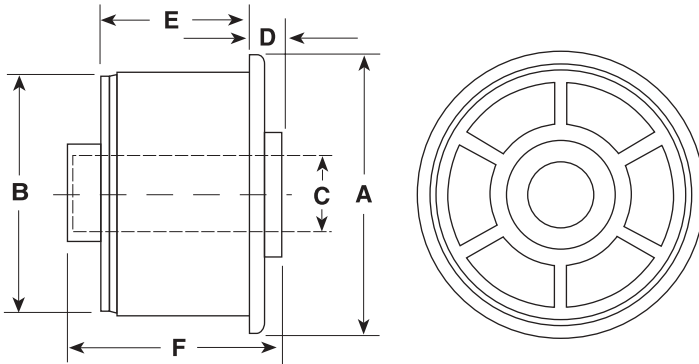


# CONVEYOR COMPONENTS

## NYLON ROLL END BEARINGS - ONE-PIECE MOLDED



P/N	Tubing O.D.A.	Tubing Gauge B	Tubing Wall	Tubing ID	Shaft C	Hub D	E	Shaft Length F
<i>RE1-824-12-BB</i>	.922	3/4" EMT	.049	.824	1/2"	3/16"	1.375	1.75
<i>RE1-824-12-TB</i>	.922	3/4" EMT	.049	.824	1/2"	3/16"	1.375	1.75
<i>RE1-833-12-BB</i>	1.050	3/4" SCH 40	.113	.824	1/2"	1/4"	1.375	1.75
<i>RE1-833-12-TB</i>	1.050	3/4" SCH 40	.113	.824	1/2"	1/4"	1.375	1.75
<i>RE1-1040-38-BB</i>	1.315	1" SCH 40	.133	.824	3/8"	1/4"	1.375	1.75
<i>RE1-1040-38-TB</i>	1.315	1" SCH 40	.133	.824	3/8"	1/4"	1.375	1.75
<i>RE1-1040-12-BB</i>	1.315	1" SCH 40	.133	1.049	1/2"	1/4"	1.375	1.75
<i>RE1-1040-12-TB</i>	1.315	1" SCH 40	.133	1.049	1/2"	1/4"	1.375	1.75
<i>RE1-1040-916-BB</i>	1.315	1" SCH 40	.133	1.049	9/16"	1/4"	1.375	1.75
<i>RE1-1040-916-TB</i>	1.315	1" SCH 40	.133	1.049	9/16"	1/4"	1.375	1.75
<i>RE1-1049-38-BB</i>	1.163	1" EMT	.057	1.049	3/8"	1/4"	1.375	1.75
<i>RE1-1049-38-TB</i>	1.163	1" EMT	.057	1.049	3/8"	1/4"	1.375	1.75
<i>RE1-1049-12-BB</i>	1.163	1" EMT	.057	1.049	1/2"	1/4"	1.375	1.75
<i>RE1-1049-12-TB</i>	1.163	1" EMT	.057	1.049	1/2"	1/4"	1.375	1.75
<i>RE1-1049-916-BB</i>	1.163	1" EMT	.057	1.049	9/16"	1/4"	1.375	1.75
<i>RE1-1049-916-TB</i>	1.163	1" EMT	.057	1.049	9/16"	1/4"	1.375	1.75
<i>RE1-1240-12-BB</i>	1.660	1 1/4" SCH 40	.140	1.380	1/2"	3/8"	1.060	1.75
<i>RE1-1240-12-TB</i>	1.660	1 1/4" SCH 40	.140	1.380	1/2"	3/8"	1.060	1.75
<i>RE1-1240-916-BB</i>	1.660	1 1/4" SCH 40	.140	1.380	9/16"	3/8"	1.060	1.75
<i>RE1-1240-916-TB</i>	1.660	1 1/4" SCH 40	.140	1.380	9/16"	3/8"	1.060	1.75
<i>RE1-1240-58-BB</i>	1.660	1 1/4" SCH 40	.140	1.380	5/8"	3/8"	1.060	1.75
<i>RE1-1240-58-TB</i>	1.660	1 1/4" SCH 40	.140	1.380	5/8"	3/8"	1.060	1.75

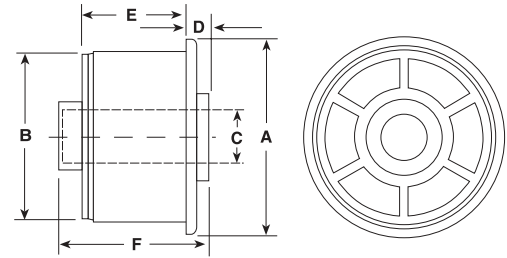
**Material:** Polyamide (Nylon) alloy.

**BB** = Sealed blind bore

**TB** = Through bore

# CONVEYOR COMPONENTS

## NYLON ROLL END BEARINGS - ONE-PIECE MOLDED



P/N	Tubing O.D.A.	Tubing Gauge B	Tubing Wall	Tubing ID	Shaft C	Hub D	E	Shaft Length F
<i>RE1-1380-12-BB</i>	1.510	1 1/4" EMT	.065	1.380	1/2"	3/8"	1.060	1.75
<i>RE1-1380-12-TB</i>	1.510	1 1/4" EMT	.065	1.380	1/2"	3/8"	1.060	1.75
<i>RE1-1380-916-BB</i>	1.510	1 1/4" EMT	.065	1.380	9/16"	3/8"	1.060	1.75
<i>RE1-1380-916-TB</i>	1.510	1 1/4" EMT	.065	1.380	9/16"	3/8"	1.060	1.75
<i>RE1-1380-58-BB</i>	1.510	1 1/4" EMT	.065	1.380	5/8"	3/8"	1.060	1.75
<i>RE1-1380-58-TB</i>	1.510	1 1/4" EMT	.065	1.380	5/8"	3/8"	1.060	1.75
<i>RE1-1516-12-BB</i>	1.500	1 1/2" 16 GA	.065	1.370	1/2"	3/8"	1.060	1.75
<i>RE1-1516-12-TB</i>	1.500	1 1/2" 16 GA	.065	1.370	1/2"	3/8"	1.060	1.75
<i>RE1-1516-916-BB</i>	1.500	1 1/2" 16 GA	.065	1.370	9/16"	3/8"	1.060	1.75
<i>RE1-1516-916-TB</i>	1.500	1 1/2" 16 GA	.065	1.370	9/16"	3/8"	1.060	1.75
<i>RE1-1516-58-BB</i>	1.500	1 1/2" 16 GA	.065	1.370	5/8"	3/8"	1.060	1.75
<i>RE1-1516-58-TB</i>	1.500	1 1/2" 16 GA	.065	1.370	5/8"	3/8"	1.060	1.75
<i>RE1-1540-12-BB</i>	1.900	1 1/2" SCH 40	.145	1.610	1/2"	3/8"	1.060	1.75
<i>RE1-1540-12-TB</i>	1.900	1 1/2" SCH 40	.145	1.610	1/2"	3/8"	1.060	1.75
<i>RE1-1540-916-BB</i>	1.900	1 1/2" SCH 40	.145	1.610	9/16"	3/8"	1.060	1.75
<i>RE1-1540-916-TB</i>	1.900	1 1/2" SCH 40	.145	1.610	9/16"	3/8"	1.060	1.75
<i>RE1-1540-58-BB</i>	1.900	1 1/2" SCH 40	.145	1.610	5/8"	3/8"	1.060	1.75
<i>RE1-1540-58-TB</i>	1.900	1 1/2" SCH 40	.145	1.610	5/8"	3/8"	1.060	1.75
<i>RE1-1580-12-BB</i>	1.900	1 1/2" SCH 80	.200	1.500	1/2"	3/8"	1.060	1.75
<i>RE1-1580-12-TB</i>	1.900	1 1/2" SCH 80	.200	1.500	1/2"	3/8"	1.060	1.75
<i>RE1-1580-916-BB</i>	1.900	2" SCH 80	.200	1.500	9/16"	3/8"	1.060	1.75
<i>RE1-1580-916-TB</i>	1.900	2" SCH 80	.200	1.500	9/16"	3/8"	1.060	1.75
<i>RE1-1580-58-BB</i>	1.900	2" SCH 80	.200	1.500	5/8"	3/8"	1.060	1.75
<i>RE1-1580-58-TB</i>	1.900	2" SCH 80	.200	1.500	5/8"	3/8"	1.060	1.75
<i>RE1-1610-12-BB</i>	1.740	1 1/2" EMT	.065	1.610	1/2"	3/8"	1.060	1.75
<i>RE1-1610-12-TB</i>	1.740	1 1/2" EMT	.065	1.610	1/2"	3/8"	1.060	1.75
<i>RE1-1610-916-BB</i>	1.740	1 1/2" EMT	.065	1.610	9/16"	3/8"	1.060	1.75
<i>RE1-1610-916-TB</i>	1.740	1 1/2" EMT	.065	1.610	9/16"	3/8"	1.060	1.75
<i>RE1-1610-58-BB</i>	1.740	1 1/2" EMT	.065	1.610	5/8"	3/8"	1.060	1.75
<i>RE1-1610-58-TB</i>	1.740	1 1/2" EMT	.065	1.610	5/8"	3/8"	1.060	1.75
<i>RE1-1716-12-BB</i>	1.740	1 3/4" 16 GA	.065	1.620	1/2"	3/8"	1.060	1.75
<i>RE1-1716-12-TB</i>	1.740	1 3/4" 16 GA	.065	1.620	1/2"	3/8"	1.060	1.75

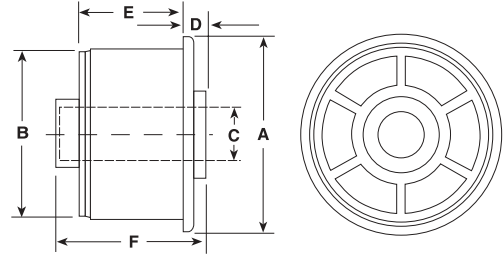
**Material:** Polyamide (Nylon) alloy.

**BB** = Sealed blind bore

**TB** = Through bore

# CONVEYOR COMPONENTS

## NYLON ROLL END BEARINGS - ONE-PIECE MOLDED



P/N	Tubing O.D.A.	Tubing Gauge B	Tubing Wall	Tubing ID	Shaft C	Hub D	E	Shaft Length F
RE1-1716-916-BB	1.740	1 3/4" 16 GA	.065	1.620	9/16"	3/8"	1.060	1.75
RE1-1716-916-TB	1.740	1 3/4" 16 GA	.065	1.620	9/16"	3/8"	1.060	1.75
RE1-1716-58-BB	1.740	1 3/4" 16 GA	.065	1.620	5/8"	3/8"	1.060	1.75
RE1-1716-58-TB	1.740	1 3/4" 16 GA	.065	1.620	5/8"	3/8"	1.060	1.75
RE1-2040-38-BB	2.375	2" SCH 40	.154	2.067	3/8"	3/8"	1.060	1.75
RE1-2040-38-TB	2.375	2" SCH 40	.154	2.067	3/8"	3/8"	1.060	1.75
RE1-2040-12-BB	2.375	2" SCH 40	.154	2.067	1/2"	3/8"	1.060	1.75
RE1-2040-12-TB	2.375	2" SCH 40	.154	2.067	1/2"	3/8"	1.060	1.75
RE1-2040-916-BB	2.375	2" SCH 40	.154	2.067	9/16"	3/8"	1.060	1.75
RE1-2040-916-TB	2.375	2" SCH 40	.154	2.067	9/16"	3/8"	1.060	1.75
RE1-2040-58-BB	2.375	2" SCH 40	.154	2.067	5/8"	3/8"	1.060	1.75
RE1-2040-58-TB	2.375	2" SCH 40	.154	2.067	5/8"	3/8"	1.060	1.75
RE1-2067-38-BB	2.197	2" EMT	.065	2.067	3/8"	3/8"	1.125	1.75
RE1-2067-38-TB	2.197	2" EMT	.065	2.067	3/8"	3/8"	1.125	1.75
RE1-2067-12-BB	2.197	2" EMT	.065	2.067	1/2"	3/8"	1.125	1.75
RE1-2067-12-TB	2.197	2" EMT	.065	2.067	1/2"	3/8"	1.125	1.75
RE1-2067-916-BB	2.197	2" EMT	.065	2.067	9/16"	3/8"	1.125	1.75
RE1-2067-916-TB	2.197	2" EMT	.065	2.067	9/16"	3/8"	1.125	1.75
RE1-2067-58-BB	2.197	2" EMT	.065	2.067	5/8"	3/8"	1.125	1.75
RE1-2067-58-TB	2.197	2" EMT	.065	2.067	5/8"	3/8"	1.125	1.75
RE1-2080-38-BB	2.375	2" SCH 80	.218	1.939	3/8"	3/8"	1.060	1.75
RE1-2080-38-TB	2.375	2" SCH 80	.218	1.939	3/8"	3/8"	1.060	1.75
RE1-2080-12-BB	2.375	2" SCH 80	.218	1.939	1/2"	3/8"	1.060	1.75
RE1-2080-12-TB	2.375	2" SCH 80	.218	1.939	1/2"	3/8"	1.060	1.75
RE1-2080-916-BB	2.375	2" SCH 80	.218	1.939	9/16"	3/8"	1.060	1.75
RE1-2080-916-TB	2.375	2" SCH 80	.218	1.939	9/16"	3/8"	1.060	1.75
RE1-2080-58-BB	2.375	2" SCH 80	.218	1.939	5/8"	3/8"	1.060	1.75
RE1-2080-58-TB	2.375	2" SCH 80	.218	1.939	5/8"	3/8"	1.060	1.75
RE1-2216-12-BB	2.250	2 1/4" 16 GA	.065	2.120	1/2"	3/8"	1.250	1.75
RE1-2216-12-TB	2.250	2 1/4" 16 GA	.065	2.120	1/2"	3/8"	1.250	1.75
RE1-2216-916-BB	2.250	2 1/4" 16 GA	.065	2.120	9/16"	3/8"	1.250	1.75
RE1-2216-916-TB	2.250	2 1/4" 16 GA	.065	2.120	9/16"	3/8"	1.250	1.75

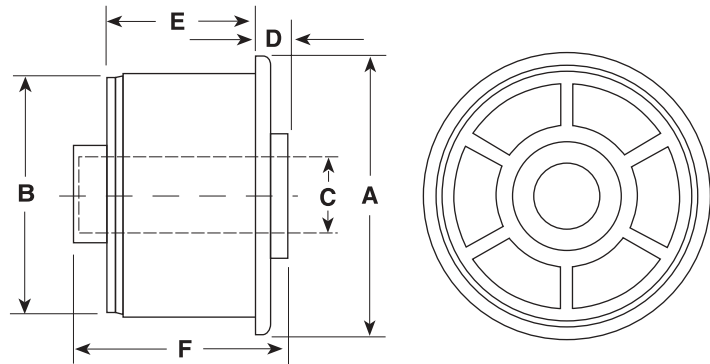
Material: Polyamide (Nylon) alloy.

BB =Sealed blind bore

TB =Through bore

# CONVEYOR COMPONENTS

## NYLON ROLL END BEARINGS - ONE-PIECE MOLDED



P/N	Tubing O.D.A.	Tubing Gauge B	Tubing Wall	Tubing ID	Shaft C	Hub D	E	Shaft Length F
RE1-2216-58-BB	2.250	2 1/4" 16 GA	.065	2.120	5/8"	3/8"	1.250	1.75
RE1-2216-58-TB	2.250	2 1/4" 16 GA	.065	2.120	5/8"	3/8"	1.250	1.75
RE1-2516-12-BB	2.500	2 1/2" 16 GA	.065	2.370	1/2"	3/8"	1.250	1.75
RE1-2516-12-TB	2.500	2 1/2" 16 GA	.065	2.370	1/2"	3/8"	1.250	1.75
RE1-2516-916-BB	2.500	2 1/2" 16 GA	.065	2.370	9/16"	3/8"	1.250	1.75
RE1-2516-916-TB	2.500	2 1/2" 16 GA	.065	2.370	9/16"	3/8"	1.250	1.75
RE1-2516-58-BB	2.500	2 1/2" 16 GA	.065	2.370	5/8"	3/8"	1.250	1.75
RE1-2516-58-TB	2.500	2 1/2" 16 GA	.065	2.370	5/8"	3/8"	1.250	1.75
RE1-2518-12-BB	2.500	2 1/2" 18 GA	.049	2.402	1/2"	3/8"	1.250	1.75
RE1-2518-12-TB	2.500	2 1/2" 18 GA	.049	2.402	1/2"	3/8"	1.250	1.75
RE1-2518-916-BB	2.500	2 1/2" 18 GA	.049	2.402	9/16"	3/8"	1.250	1.75
RE1-2518-916-TB	2.500	2 1/2" 18 GA	.049	2.402	9/16"	3/8"	1.250	1.75
RE1-2518-58-BB	2.500	2 1/2" 18 GA	.049	2.402	5/8"	3/8"	1.250	1.75
RE1-2518-58-TB	2.500	2 1/2" 18 GA	.049	2.402	5/8"	3/8"	1.250	1.75
RE1-2750-716-BB	2.750	2 3/4" 16 GA	.065	2.620	7/16"	3/8"	1.250	1.75
RE1-2750-716-TB	2.750	2 3/4" 16 GA	.065	2.620	7/16"	3/8"	1.250	1.75
RE1-2750-12-BB	2.750	2 3/4" 16 GA	.065	2.620	1/2"	3/8"	1.250	1.75
RE1-2750-12-TB	2.750	2 3/4" 16 GA	.065	2.620	1/2"	3/8"	1.250	1.75
RE1-2750-916-BB	2.750	2 3/4" 16 GA	.065	2.620	9/16"	3/8"	1.250	1.75
RE1-2750-916-TB	2.750	2 3/4" 16 GA	.065	2.620	9/16"	3/8"	1.250	1.75
RE1-2750-58-BB	2.750	2 3/4" 16 GA	.065	2.620	5/8"	3/8"	1.250	1.75
RE1-2750-58-TB	2.750	2 3/4" 16 GA	.065	2.620	5/8"	3/8"	1.250	1.75

Material: Polyamide (Nylon) alloy.

BB = Sealed blind bore

TB = Through bore