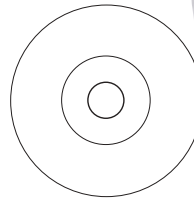
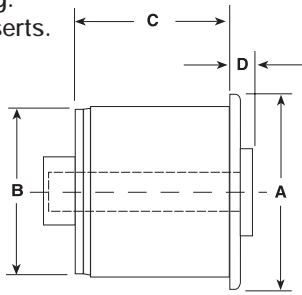


CONVEYOR COMPONENTS

NYLON ROLL ENDS FOR STEEL TUBING

Two-piece bearing inserts.
 The bearing insert is press fit into housing.
 Available with Nylon or UHMW bearing inserts.



P/N	A	Tubing Gauge B	Tubing Wall	B	Shaft	D	C	E
RE2-1380S-12-TB	1.51	1 1/4" EMT	.065	1.380	1/2"	3/8	1.06	1/8
RE2-1380S-12-BB	1.51	1 1/4" EMT	.065	1.380	1/2"	3/8	1.06	1/8
RE2-1380S-916-TB	1.51	1 1/4" EMT	.065	1.380	9/16"	3/8	1.06	1/8
RE2-1380S-916-BB	1.51	1 1/4" EMT	.065	1.380	9/16"	3/8	1.06	1/8
RE2-1380S-58-TB	1.51	1 1/4" EMT	.065	1.380	5/8"	3/8	1.06	1/8
RE2-1380S-58-BB	1.51	1 1/4" EMT	.065	1.380	5/8"	3/8	1.06	1/8
RE2-1610S-12-TB	1.75	1 1/2" EMT	.065	1.610	1/2"	3/8	1.06	1/8
RE2-1610S-12-BB	1.75	1 1/2" EMT	.065	1.610	1/2"	3/8	1.06	1/8
RE2-1610S-916-TB	1.75	1 1/2" EMT	.065	1.610	9/16"	3/8	1.06	1/8
RE2-1610S-916-BB	1.75	1 1/2" EMT	.065	1.610	9/16"	3/8	1.06	1/8
RE2-1610S-58-TB	1.75	1 1/2" EMT	.065	1.610	5/8"	3/8	1.06	1/8
RE2-1610S-58-BB	1.75	1 1/2" EMT	.065	1.610	5/8"	3/8	1.06	1/8
RE2-2016S-12-TB	2.00	2" EMT	.065	1.870	1/2"	3/8	1.06	1/8
RE2-2016S-12-BB	2.00	2" EMT	.065	1.870	1/2"	3/8	1.06	1/8
RE2-2016S-916-TB	2.00	2" EMT	.065	1.870	9/16"	3/8	1.06	1/8
RE2-2016S-916-BB	2.00	2" EMT	.065	1.870	9/16"	3/8	1.06	1/8
RE2-2016S-58-TB	2.00	2" EMT	.065	1.870	5/8"	3/8	1.06	1/8
RE2-2016S-58-BB	2.00	2" EMT	.065	1.870	5/8"	3/8	1.06	1/8
RE2-2067S-12-TB	2.197	2" EMT	.065	2.067	1/2"	3/8	1.06	1/8
RE2-2067S-12-BB	2.197	2" EMT	.065	2.067	1/2"	3/8	1.06	1/8
RE2-2067S-916-TB	2.197	2" EMT	.065	2.067	9/16"	3/8	1.06	1/8
RE2-2067S-916-BB	2.197	2" EMT	.065	2.067	9/16"	3/8	1.06	1/8
RE2-2067S-58-TB	2.197	2" EMT	.065	2.067	5/8"	3/8	1.06	1/8
RE2-2067S-58-BB	2.197	2" EMT	.065	2.067	5/8"	3/8	1.06	1/8
RE2-2216S-12-TB	2.250	2 1/4" 16 GA	.065	2.120	1/2"	3/8	1.06	1/8
RE2-2216S-12-BB	2.250	2 1/4" 16 GA	.065	2.120	1/2"	3/8	1.06	1/8
RE2-2216S-916-TB	2.250	2 1/4" 16 GA	.065	2.120	9/16"	3/8	1.06	1/8
RE2-2216S-916-BB	2.250	2 1/4" 16 GA	.065	2.120	9/16"	3/8	1.06	1/8
RE2-2216S-58-TB	2.250	2 1/4" 16 GA	.065	2.120	5/8"	3/8	1.06	1/8
RE2-2216S-58-BB	2.250	2 1/4" 16 GA	.065	2.120	5/8"	3/8	1.06	1/8

Shell Color: White

Bearing Insert: Polyamide (Nylon) alloy. For UHMW, replace "N" in the part number with "U".

BB = Blind bore

TB = Through bore