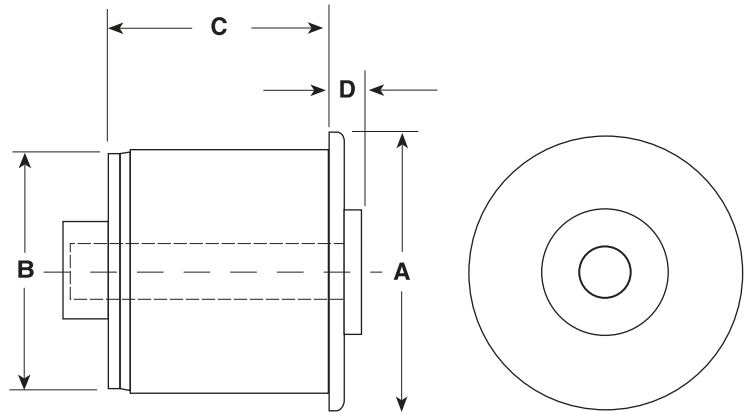


# CONVEYOR COMPONENTS

## ABS END PLUG FOR PVC PIPE

Two piece bearing inserts.  
 The bearing insert is press fit into housing.  
 Available with Nylon or UHMW bearing inserts.



P/N	Tubing Gauge	O.D. A	I.D. B	Tubing Wall	C	D	Shaft Size
<i>RE2-1540-N-12-T</i>	1 1/2" SCH 40	1.9000	1.610	.145	1.180	.290	1/2"
<i>RE2-1540-N-12-B</i>	1 1/2" SCH 40	1.9000	1.610	.145	1.180	.290	1/2"
<i>RE2-1540-N-916-T</i>	1 1/2" SCH 40	1.9000	1.610	.145	1.180	.290	9/16"
<i>RE2-1540-N-916-B</i>	1 1/2" SCH 40	1.9000	1.610	.145	1.180	.290	9/16"
<i>RE2-1540-N-58-T</i>	1 1/2" SCH 40	1.9000	1.610	.145	1.180	.290	5/8"
<i>RE2-1540-N-58-B</i>	1 1/2" SCH 40	1.9000	1.610	.145	1.180	.290	5/8"
<i>RE2-1540-N-34-T</i>	1 1/2" SCH 40	1.9000	1.610	.145	1.180	.290	3/4"
<i>RE2-1540-N-34-B</i>	1 1/2" SCH 40	1.9000	1.610	.145	1.180	.290	3/4"
<i>RE2-1580-N-12-T</i>	1 1/2" SCH 80	1.9000	1.500	.200	1.180	.290	1/2"
<i>RE2-1580-N-12-B</i>	1 1/2" SCH 80	1.9000	1.500	.200	1.180	.290	1/2"
<i>RE2-1580-N-916-T</i>	1 1/2" SCH 80	1.9000	1.500	.200	1.180	.290	9/16"
<i>RE2-1580-N-916-B</i>	1 1/2" SCH 80	1.9000	1.500	.200	1.180	.290	9/16"
<i>RE2-1580-N-58-T</i>	1 1/2" SCH 80	1.9000	1.500	.200	1.180	.290	5/8"
<i>RE2-1580-N-58-B</i>	1 1/2" SCH 80	1.9000	1.500	.200	1.180	.290	5/8"

**Shell Color:** White

**Bearing Insert:** Polyamide (Nylon) alloy. For UHMW, replace "N" in the part number with "U".

**Material:** Polyamide (Nylon) alloy.

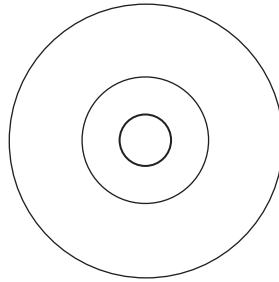
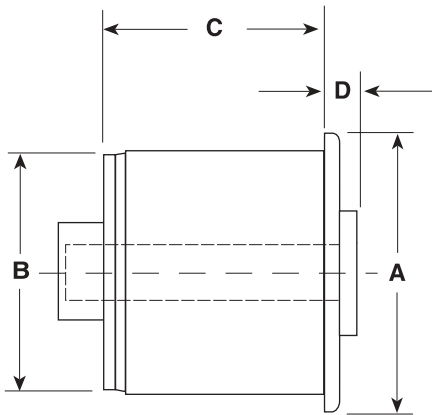
**B** = Blind bore

**T** = Through bore

# CONVEYOR COMPONENTS

## ABS END PLUG FOR PVC PIPE

Two piece bearing inserts.  
 The bearing insert is press fit into housing.  
 Available with Nylon or UHMW bearing inserts.



P/N	Tubing Gauge	O.D. A	I.D. B	Tubing Wall	C	D	Shaft Size
RE2-2040-N-12-T	2" SCH 40	2.370	2.067	.154	1.190	.290	1/2"
RE2-2040-N-12-B	2" SCH 40	2.375	2.067	.154	1.190	.290	1/2"
RE2-2040-N-916-T	2" SCH 40	2.375	2.067	.154	1.190	.290	9/16"
RE2-2040-N-916-B	2" SCH 40	2.375	2.067	.154	1.190	.290	9/16"
RE2-2040-N-58-T	2" SCH 40	2.375	2.067	.154	1.190	.290	5/8"
RE2-2040-N-58-B	2" SCH 40	2.375	2.067	.154	1.190	.290	5/8"
RE2-2040-N-34-T	2" SCH 40	2.375	2.067	.154	1.190	.290	3/4"
RE2-2040-N-34-B	2" SCH 40	2.375	2.067	.154	1.190	.290	3/4"
RE2-2080-N-12-T	2" SCH 80	2.375	1.939	.218	1.190	.290	1/2"
RE2-2080-N-12-B	2" SCH 80	2.375	1.939	.218	1.190	.290	1/2"
RE2-2080-N-916-T	2" SCH 80	2.375	1.939	.218	1.190	.290	9/16"
RE2-2080-N-916-B	2" SCH 80	2.375	1.939	.218	1.190	.290	9/16"
RE2-2080-N-58-T	2" SCH 80	2.375	1.939	.218	1.190	.290	5/8"
RE2-2080-N-58-B	2" SCH 80	2.375	1.939	.218	1.190	.290	5/8"
RE2-2540-N-12-T	2 1/2" SCH 40	2.875	2.469	.203	1.300	.330	1/2"
RE2-2080-N-12-B	2 1/2" SCH 40	2.875	2.469	.203	1.300	.330	1/2"
RE2-2080-N-916-T	2 1/2" SCH 40	2.875	2.469	.203	1.300	.330	9/16"
RE2-2080-N-916-B	2 1/2" SCH 40	2.875	2.469	.203	1.300	.330	9/16"
RE2-2080-N-58-T	2 1/2" SCH 40	2.875	2.469	.203	1.300	.330	5/8"
RE2-2080-N-58-B	2 1/2" SCH 40	2.875	2.469	.203	1.300	.330	5/8"
RE2-2080-N-34-T	2 1/2" SCH 40	2.875	2.469	.203	1.300	.330	3/4"
RE2-2080-N-34-B	2 1/2" SCH 40	2.875	2.469	.203	1.300	.330	3/4"

Shell Color: White

Bearing Insert: Polyamide (Nylon) alloy. For UHMW, replace "N" in the part number with "U".

B = Blind bore

T = Through bore