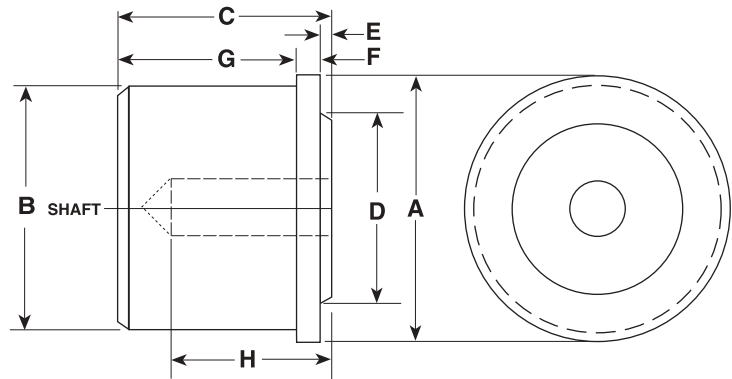


CONVEYOR COMPONENTS

UHMW ROLL END BEARINGS - MACHINED

Blind Bore - Conveyor Roll Bearings

Try using one of our roll ends when operating in a wet or dirty environment. No bearings, no grease. Just quiet, smooth-running efficiency.



P/N	A Tubing O.D.A.	Tubing Gauge	Tubing Wall	B Tubing ID	C Bearing Length	D	E	F	G	H Depth Hole
1216DS	1 1/2"	16	.065	1.370	2 1/8"	7/8"	1/16"	3/16"	1 7/8"	1 3/4"
1214DS	1 1/2"	14	.083	1.334	2 1/8"	7/8"	1/16"	3/16"	1 7/8"	1 3/4"
1416DS	1 3/4"	16	.065	1.620	2 1/8"	1"	1/16"	3/16"	1 7/8"	1 3/4"
12P40DS	1.900	1 1/2" Pipe SCH 40	.145	1.610	2 1/8"	1"	1/16"	3/16"	1 7/8"	1 3/4"
12P80DS	1.900	1 1/2" Pipe SCH 80	.200	1.500	2 1/8"	1"	1/16"	3/16"	1 7/8"	1 3/4"
1618DS	2"	18	.049	1.902	2 1/8"	1"	1/8"	1/4"	1 3/4"	1 3/4"
1616DS	2"	16	.065	1.870	2 1/8"	1"	1/8"	1/4"	1 3/4"	1 3/4"
1614DS	2"	14	.083	1.834	2 1/8"	1"	1/8"	1/4"	1 3/4"	1 3/4"
1818DS	2 1/4"	18	.049	2.152	2 1/8"	1"	1/8"	1/4"	1 3/4"	1 3/4"
1816DS	2 1/4"	16	.065	2.120	2 1/8"	1"	1/8"	1/4"	1 3/4"	1 3/4"
1814DS	2 1/4"	14	.083	2.084	2 1/8"	1"	1/8"	1/4"	1 3/4"	1 3/4"
1916DS	2 3/8"	16	.065	2.245	2 1/8"	1"	1/8"	1/4"	1 3/4"	1 3/4"
16P40DS	2.375	2" Pipe SCH 40	.154	2.067	2 1/8"	1"	1/8"	1/4"	1 3/4"	1 3/4"
16P80DS	2.375	2" Pipe SCH 80	.218	1.939	2 1/8"	1"	1/8"	1/4"	1 3/4"	1 3/4"
2018DS	2 1/2"	18	.049	2.402	2 1/8"	1"	1/8"	1/4"	1 3/4"	1 3/4"
2016DS	2 1/2"	16	.065	2.370	2 1/8"	1"	1/8"	1/4"	1 3/4"	1 3/4"
2014DS	2 1/2"	14	.083	2.334	2 1/8"	1"	1/8"	1/4"	1 3/4"	1 3/4"
2011DS	2 1/2"	11	.120	2.260	2 1/8"	1"	1/8"	1/4"	1 3/4"	1 3/4"
2216DS	2 3/4"	16	.065	2.620	2 1/8"	1 1/8"	1/8"	1/4"	1 3/4"	1 3/4"
2418DS	3"	18	.049	2.902	2 1/8"	1 1/4"	1/8"	1/4"	1 3/4"	1 3/4"
2416DS	3"	16	.065	2.870	2 1/8"	1 1/4"	1/8"	1/4"	1 3/4"	1 3/4"
2414DS	3"	14	.083	2.834	2 1/8"	1 1/4"	1/8"	1/4"	1 3/4"	1 3/4"

Note: Insert shaft size after part number. Proper running clearance will be provided.

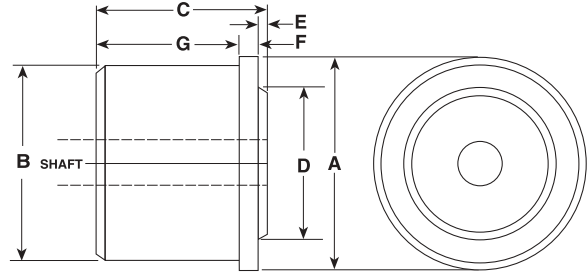
* Inquire about other available sizes.

CONVEYOR COMPONENTS

UHMW ROLL END BEARINGS - MACHINED

Thru Bore - Standard Conveyor Roll Bearings

Increasing the length of the bearings makes the standard roll ends suitable for tougher, high-load applications. We have a size for every application, no matter how large. Also available in Nylon and Acetal.



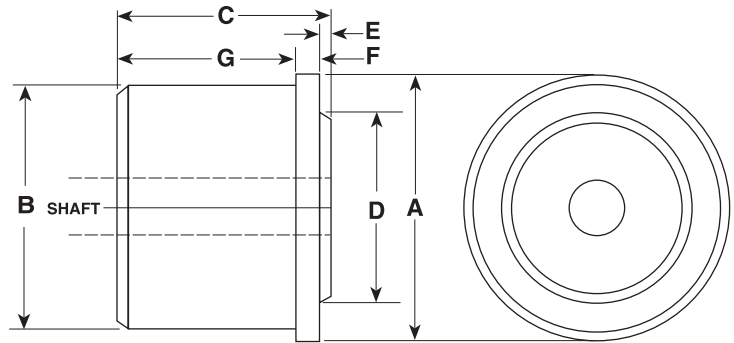
P/N	A Tubing O.D.A.	Tubing Gauge	Tubing Wall	B Tubing ID	C Length	D	E	F	G
1118DR	1 3/8"	18	.049	1.277	1 1/4"	7/8"	1/16"	3/16"	1"
1116DR	1 3/8"	16	.065	1.245	1 1/4"	7/8"	1/16"	3/16"	1"
1218DR	1 1/2"	18	.049	1.402	1 1/2"	7/8"	1/16"	3/16"	1 1/4"
1216DR	1 1/2"	16	.065	1.370	1 1/2"	7/8"	1/16"	3/16"	1 1/4"
1214DR	1 1/2"	14	.083	1.334	1 1/2"	7/8"	1/16"	3/16"	1 1/4"
10EMDR	1.510	1 1/4" EMT	.065	1.380	1 1/2"	7/8"	1/16"	3/16"	1 1/4"
1316DR	1 5/8"	16	.065	1.495	1 1/2"	1"	1/16"	3/16"	1 1/4"
1311DR	1 5/8"	11	.120	1.385	1 1/2"	1"	1/16"	3/16"	1 1/4"
10P40DR	1.660	1 1/4" Pipe	.140	1.380	1 1/2"	1"	1/16"	3/16"	1 1/4"
12EMDR	1.740	1 1/2" EMT	.65	1.610	1 1/2"	1"	1/16"	3/16"	1 1/4"
1416DR	1 3/4"	16	.065	1.620	1 1/2"	1"	1/16"	3/16"	1 1/4"
1414DR	1 3/4"	14	.083	1.583	1 1/2"	1"	1/16"	3/16"	1 1/4"
1413DR	1 3/4"	13	.095	1.560	1 1/2"	1"	1/16"	3/16"	1 1/4"
1411DR	1 3/4"	11	.120	1.510	1 1/2"	1"	1/16"	3/16"	1 1/4"
1516DR	1 7/8"	16	.065	1.745	1 1/2"	1"	1/16"	3/16"	1 1/4"
1513DR	1 7/8"	13	.095	1.685	1 1/2"	1"	1/16"	3/16"	1 1/4"
12P40DR	1.900	1 1/2" Pipe SCH 40	.145	1.610	1 1/2"	1"	1/16"	3/16"	1 1/4"
12P80DR	1.900	1 1/2" Pipe SCH 80	.200	1.500	1 1/2"	1"	1/16"	3/16"	1 1/4"
1619DR	1.900	16	.065	1.770	1 1/2"	1"	1/16"	3/16"	1 1/4"
1618DR	2	18	.049	1.902	1 5/8"	1"	1/8"	1/4"	1 1/4"
1616DR	2	16	.065	1.870	1 5/8"	1"	1/8"	1/4"	1 1/4"
1614DR	2	14	.083	1.834	1 5/8"	1"	1/8"	1/4"	1 1/4"
1613DR	2	13	.095	1.810	1 5/8"	1"	1/8"	1/4"	1 1/4"
1611DR	2	11	.120	1.760	1 5/8"	1"	1/8"	1/4"	1 1/4"
16EMDR	2.197	2" EMT	.65	2.067	1 5/8"	1"	1/8"	1/4"	1 1/4"
1818DR	2 1/4"	18	.049	2.152	1 5/8"	1"	1/8"	1/4"	1 1/4"
1816DR	2 1/4"	16	.065	2.120	1 5/8"	1"	1/8"	1/4"	1 1/4"
1814DR	2 1/4"	14	.083	2.084	1 5/8"	1"	1/8"	1/4"	1 1/4"
1813DR	2 1/4"	13	.095	2.060	1 5/8"	1"	1/8"	1/4"	1 1/4"
1811DR	2 1/4"	11	.120	2.010	1 5/8"	1"	1/8"	1/4"	1 1/4"
1810DR	2 1/4"	10	.134	1.982	1 5/8"	1"	1/8"	1/4"	1 1/4"
1916DR	2 3/8"	16	.065	2.245	1 5/8"	1"	1/8"	1/4"	1 1/4"
1913DR	2 3/8"	13	.095	2.185	1 5/8"	1"	1/8"	1/4"	1 1/4"
1911DR	2 3/8"	11	.120	2.135	1 5/8"	1"	1/8"	1/4"	1 1/4"
16P40DR	2.375	2" Pipe SCH 40	.154	2.067	1 5/8"	1"	1/8"	1/4"	1 1/4"
16P80DR	2.375	2" Pipe SCH 80	.218	1.939	1 5/8"	1"	1/8"	1/4"	1 1/4"
2016DR	2 1/2"	16	.065	2.370	1 5/8"	1"	1/8"	1/4"	1 1/4"
2014DR	2 1/2"	14	.083	2.334	1 5/8"	1"	1/8"	1/4"	1 1/4"
2013DR	2 1/2"	13	.095	2.310	1 5/8"	1"	1/8"	1/4"	1 1/4"
2011DR	2 1/2"	11	.120	2.260	1 5/8"	1"	1/8"	1/4"	1 1/4"
2010DR	2 1/2"	10	.134	2.232	1 5/8"	1"	1/8"	1/4"	1 1/4"

Note: Insert shaft size after part number. Proper running clearance will be provided.
* Inquire about other available sizes.

CONVEYOR COMPONENTS

UHMW ROLL END BEARINGS - MACHINED

Thru Bore - Standard Conveyor Roll Bearings



P/N	A Tubing O.D.A.	Tubing Gauge	Tubing Wall	B Tubing ID	C Length	D	E	F	G
2216DR	2 3/4"	16	.065	2.620	1 5/8"	1 1/8"	1/8"	1/4"	1 1/4"
2213DR	2 3/4"	13	.095	2.560	1 5/8"	1 1/8"	1/8"	1/4"	1 1/4"
2211DR	2 3/4"	11	.120	2.510	1 5/8"	1 1/8"	1/8"	1/4"	1 1/4"
20P40DR	2.875	2 1/2" Pipe	.203	2.469	1 5/8"	1 1/8"	1/8"	1/4"	1 1/4"
2416DR	3"	16	.065	2.870	1 3/4"	1 1/4"	1/8"	1/4"	1 3/8"
2414DR	3"	14	.083	2.834	1 3/4"	1 1/4"	1/8"	1/4"	1 3/8"
2413DR	3"	13	.095	2.810	1 3/4"	1 1/4"	1/8"	1/4"	1 3/8"
2411DR	3"	11	.120	2.760	1 3/4"	1 1/4"	1/8"	1/4"	1 3/8"
2616DR	3 1/4"	16	.065	3.120	1 3/4"	1 1/4"	1/8"	1/4"	1 3/8"
2613DR	3 1/4"	13	.095	3.060	1 3/4"	1 1/4"	1/8"	1/4"	1 3/8"
2816DR	3 1/2"	16	.065	3.370	1 3/4"	1 1/4"	1/8"	1/4"	1 3/8"
2813DR	3 1/2"	13	.095	3.310	1 3/4"	1 1/4"	1/8"	1/4"	1 3/8"
2811DR	3 1/2"	11	.120	3.260	1 3/4"	1 1/4"	1/8"	1/4"	1 3/8"
24P40DR	3.500	3" Pipe SCH 40	.216	3.068	1 3/4"	1 1/4"	1/8"	1/4"	1 3/8"
24P80DR	3.500	3" Pipe SCH 80	.300	2.900	1 3/4"	1 1/4"	1/8"	1/4"	1 3/8"
3016DR	3 3/4"	16	.065	3.620	1 3/4"	1 1/4"	1/8"	1/4"	1 3/8"
3011DR	3 3/4"	11	.120	3.510	1 3/4"	1 1/4"	1/8"	1/4"	1 3/8"
3216DR	4"	16	.065	3.870	1 3/4"	1 1/4"	1/8"	1/4"	1 3/8"
3214DR	4"	14	.083	3.834	1 3/4"	1 1/4"	1/8"	1/4"	1 3/8"
3213DR	4"	13	.095	3.810	1 3/4"	1 1/4"	1/8"	1/4"	1 3/8"
3211DR	4"	11	.120	3.760	1 3/4"	1 1/4"	1/8"	1/4"	1 3/8"
28P40DR	4.000	3 1/2" Pipe	.226	3.548	1 3/4"	1 1/4"	1/8"	1/4"	1 3/8"

Note: Insert shaft size after part number. Proper running clearance will be provided.
* Inquire about other available sizes.