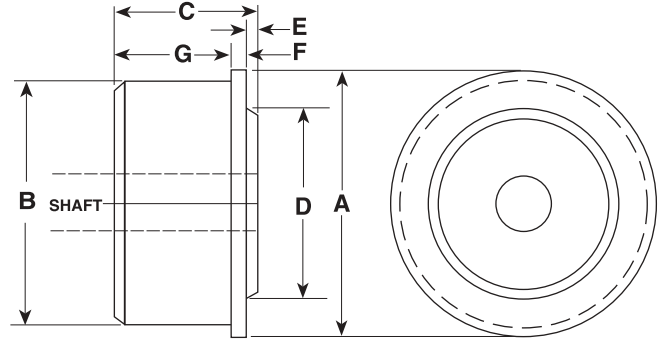


# CONVEYOR COMPONENTS

## UHMW ROLL END BEARINGS - MACHINED

### Light Duty - Conveyor Roll Bearings

A tough, low-friction bearing for light conveyor applications, nothing can top our light duty roll ends! In many cases, they can replace expensive ball-bearing assemblies. Also available in Nylon and Acetal.



P/N	A Tubing O.D.A.	Tubing Gauge	Tubing Wall	B Tubing ID	C Length	D	E	F	G
420DL	1/2"	20	.035	.430	1/2"	3/8"	1/16"	1/8"	5/16"
418DL	1/2"	18	.049	.402	1/2"	3/8"	1/16"	1/8"	5/16"
520DL	5/8"	20	.035	.555	1/2"	3/8"	1/16"	1/8"	5/16"
4EMDL	.706	1/2" EMT	.042	.622	11/16"	7/16"	1/16"	1/8"	1/2"
620DL	3/4"	20	.035	.680	11/16"	1/2"	1/16"	1/8"	1/2"
618DL	3/4"	18	.049	.652	11/16"	1/2"	1/16"	1/8"	1/2"
616DL	3/4"	16	.065	.602	11/16"	1/2"	1/16"	1/8"	1/2"
720DL	7/8"	20	.035	.805	11/16"	1/2"	1/16"	1/8"	1/2"
718DL	7/8"	18	.049	.777	11/16"	1/2"	1/16"	1/8"	1/2"
716DL	7/8"	16	.065	.745	11/16"	1/2"	1/16"	1/8"	1/2"
6EMDL	.922	3/4" EMT	.049	.824	11/16"	1/2"	1/16"	1/8"	1/2"
820DL	1"	20	.035	.930	11/16"	5/8"	1/16"	1/8"	1/2"
818DL	1"	18	.049	.902	11/16"	5/8"	1/16"	1/8"	1/2"
817DL	1"	17	.058	.884	11/16"	5/8"	1/16"	1/8"	1/2"
816DL	1"	16	.065	.870	11/16"	5/8"	1/16"	1/8"	1/2"
6P40DL	1.050	3/4" Pipe SCH 40	.113	.824	11/16"	5/8"	1/16"	1/8"	1/2"
917DL	1 1/8"	17	.058	1.009	11/16"	5/8"	1/16"	1/8"	1/2"
916DL	1 1/8"	16	.065	.995	11/16"	5/8"	1/16"	1/8"	1/2"
8EMDL	1.163	1" EMT	.057	1.049	11/16"	5/8"	1/16"	1/8"	1/2"
1020DL	1 1/4"	20	.035	1.180	3/4"	7/8"	1/16"	1/8"	9/16"
1018DL	1 1/4"	18	.049	1.152	3/4"	7/8"	1/16"	1/8"	9/16"
1016DL	1 1/4"	16	.065	1.120	3/4"	7/8"	1/16"	1/8"	9/16"
8P40DL	1.315	1" Pipe SCH 40	.133	1.049	3/4"	1"	1/16"	1/8"	9/16"
1118DL	1 3/8"	18	.049	1.277	3/4"	1"	1/16"	1/8"	9/16"
1116DL	1 3/8"	16	.065	1.245	3/4"	1"	1/16"	1/8"	9/16"
1220DL	1 1/2"	20	.035	1.430	1"	1"	1/16"	3/16"	3/4"
1218DL	1 1/2"	18	.049	1.402	1"	1"	1/16"	3/16"	3/4"
1216DL	1 1/2"	16	.065	1.370	1"	1"	1/16"	3/16"	3/4"
10EMDL	1.510	1 1/4" EMT	.065	1.380	1"	1"	1/16"	3/16"	3/4"
1320DL	1 5/8"	20	.035	1.555	1"	1"	1/16"	3/16"	3/4"
1318DL	1 5/8"	18	.049	1.527	1"	1"	1/16"	3/16"	3/4"
1316DL	1 5/8"	16	.035	1.555	1"	1"	1/16"	3/16"	3/4"
12EMDL	1.740	1 1/2" EMT	.065	1.610	1"	1"	1/16"	3/16"	3/4"
1420DL	1 3/4"	20	.035	1.680	1"	1"	1/16"	3/16"	3/4"
1418DL	1 3/4"	18	.049	1.652	1"	1"	1/16"	3/16"	3/4"
1416DL	1 3/4"	16	.065	1.620	1"	1"	1/16"	3/16"	3/4"
1520DL	1 7/8"	20	.035	1.805	1"	1"	1/16"	3/16"	3/4"
1518DL	1 7/8"	18	.049	1.777	1"	1"	1/16"	3/16"	3/4"
1516DL	1 7/8"	16	.065	1.745	1"	1"	1/16"	3/16"	3/4"
12P40DL	1.900	1 1/2" Pipe SCH 40	.145	1.610	1"	1"	1/16"	3/16"	3/4"
12P80DL	1.900	1 1/2" Pipe SCH 80	.200	1.500	1"	1"	1/16"	3/16"	3/4"

Note: Insert shaft size after part number. Proper running clearance will be provided.  
\* Inquire about other available sizes.