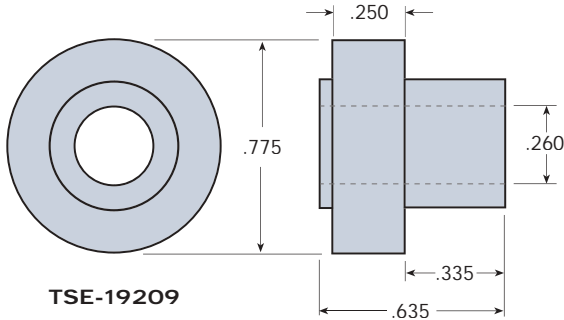


CONVEYOR COMPONENTS

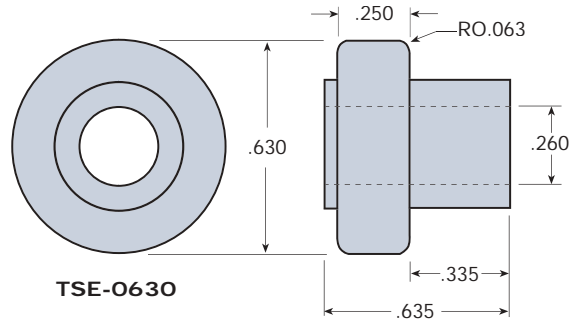
Combiner Roller

Combiner Wheel

Material: Acetal enhanced with PTFE

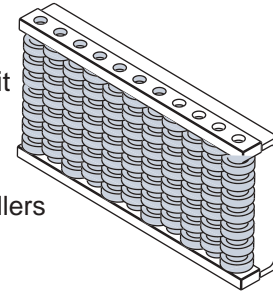


TSE-19209



TSE-0630

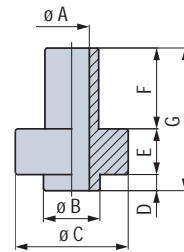
Assembly Unit



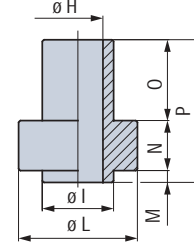
Rollers

- Material : Acetal POM (white).
- Packaging : Part. 63 (500 pieces), Part. 95 (200 pieces).
- Part. 63 can be used as spare part in roller guides Part. 128-128 S-628 S.

P-MB-63-51370

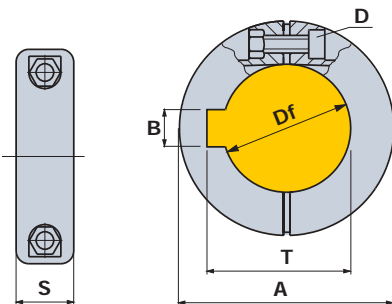


P-MB-95-51380



Dim	in	mm
A	0.25	6.3
B	0.39	10
C	0.83	21
D	0.12	3
E	0.33	8.5
F	0.59	15
G	1.04	26.5
H	0.41	10.5
I	0.59	15
L	0.98	25
M	0.10	2.5
N	0.41	10.5
O	0.67	17
P	1.18	30

Split Shaft Collar



Split Shaft Collar

Bore dia.		ø A		S		B		T		D	Code	
Part.	in	mm	in	mm	in	mm	in	mm	in	mm		
• Without seat keyway												
-	12	1.18	30	0.46	11.7	-	-	-	-	M4	655062	
-	1/2"	1.18	30	0.46	11.7	-	-	-	-	M4	655072	
-	14	1.18	30	0.46	11.7	-	-	-	-	M4	655082	
-	5/8"	16	1.38	35	0.46	11.7	-	-	-	M4	655092	
-	18	1.57	40	0.55	14	-	-	-	-	M4	614712	
-	3/4"	20	1.57	40	0.55	14	-	-	-	M4	655102	
-	20	1.57	40	0.55	14	-	-	-	-	M4	614722	
-	25	1.77	45	0.55	14	-	-	-	-	M4	619452	
• With seat keyway												
-	1"	30	1.77	45	0.55	14	0.25	6.4	1.13	28.58	M4	655112
-	30	1.97	50	0.63	16	0.31	8	1.31	33.3	M4	614732	
-	1 1/4"	35	1.97	50	0.63	16	0.25	6.4	1.38	34.98	M4	655122
-	35	2.50	63.5	0.71	18	0.39	10	1.51	38.3	M5	614742	
-	1 1/2"	40	2.50	63.5	0.71	18	0.38	9.58	1.68	42.65	M5	655132
-	40	2.50	63.5	0.71	18	0.47	12	1.70	43.3	M5	615012	

- Material : collar in reinforced Polyamide (Nylon) PA FV (Black), tightening bolt in stainless steel AISI 304.
- Max recommended tightening torque : 26 in lb (0.3 Kgm).